

**Assessment Area**

**Noise Level**

dB LAeq 24 hr

- 55 - 60
- 60 - 65
- 65 - 70
- ≥ 70

**Zones**

- Residential - Mixed Housing Suburban Zone
- Residential - Mixed Housing Urban Zone
- Residential - Terrace Housing and Apartment Buildings Zone
- Open Space - Conservation Zone
- Open Space - Informal Recreation Zone
- Open Space - Sport and Active Recreation Zone
- Business - Local Centre Zone
- Special Purpose Zone
- Road [i]

This map contains data derived in part or wholly from sources other than those party to the Supporting Growth Alliance, and therefore, no representations or warranties are made by those party to the Supporting Growth Alliance as to the accuracy or completeness of this information.

Map intended for distribution as a PDF document.  
Scale may be incorrect when printed.

Contains information sourced from LINZ. Crown Copyright Reserved.

Unitary plan data sourced from Auckland Council published web services.  
Legend information can be viewed on Auckland Council unitary plan viewer.

Linework shown on this plan is conceptual only.  
Not to be used for construction.

Esri Community Maps Contributors, LINZ, Stats NZ, Esri, HERE, Garmin, Foursquare, METI/NASA, USGS, Eagle Technology, Land Information New Zealand, GEBCO, Community maps contributors

Map Scale @ A3:



Revision	Author	Verified	Approved	Date
1	Author	DRAFT	DRAFT	dd/mm/yyyy

**FOR INTERNAL USE ONLY**

**Supporting Growth**

**AUP Maps - Do Minimum Scenario - NoR 1**

*Working Plans of Te Tupu Ngatahi.*  
*For the purpose of INTERNAL workshops (not for wider distribution).*

Client:	Supporting Growth
Project:	North West HIF

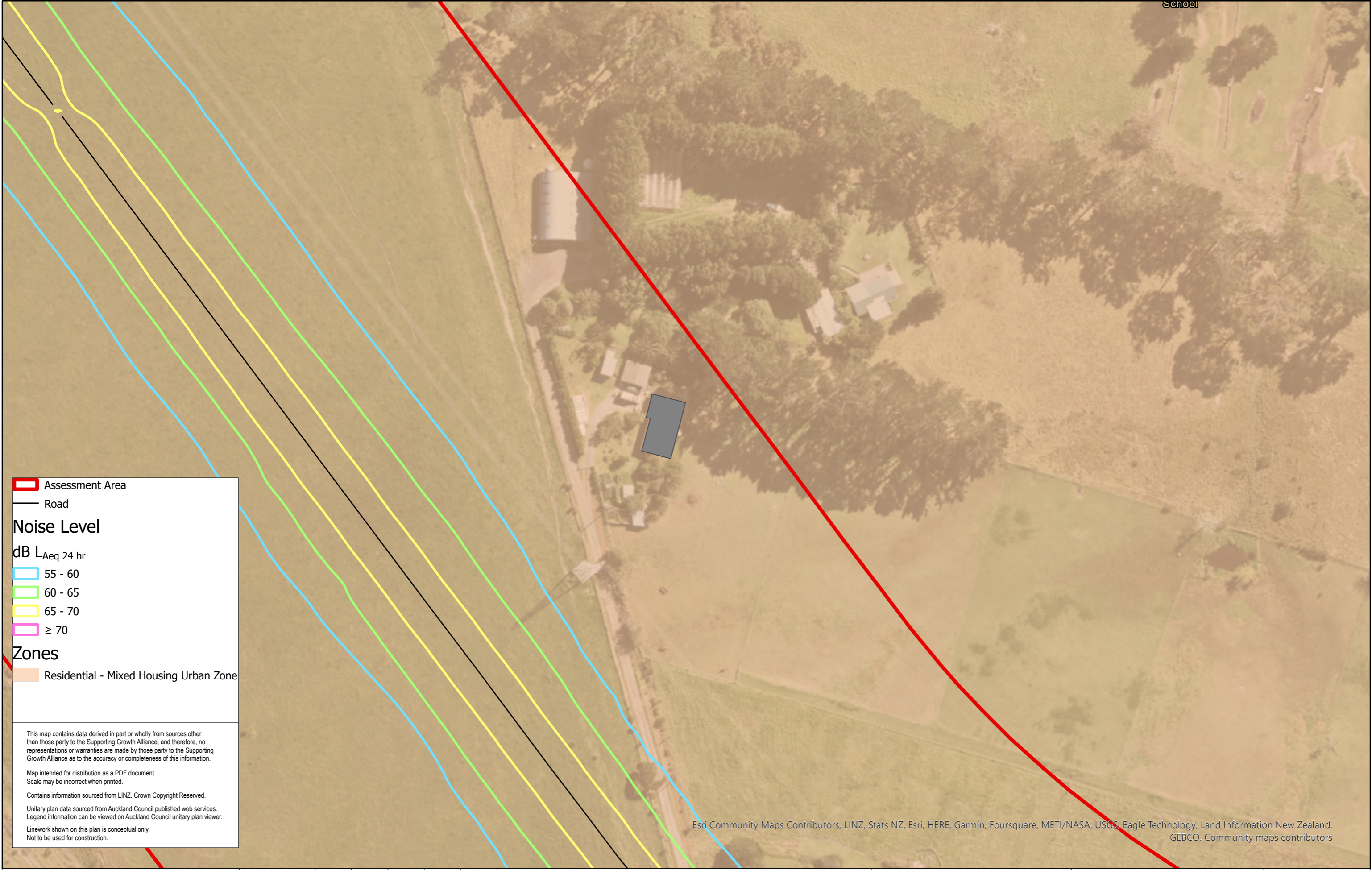


Discipline:	GIS
Drawing No:	SGA-NV-NW-013

School

Name: 3\_Do\_Minimum\_AUP

Path: C:\GIS\SGA\_HIF\_JRISGA\_HIF\_JR.aprx



**Assessment Area**

— Road

**Noise Level**

dB LAeq 24 hr

- 55 - 60
- 60 - 65
- 65 - 70
- ≥ 70

**Zones**

- Residential - Mixed Housing Urban Zone

This map contains data derived in part or wholly from sources other than those party to the Supporting Growth Alliance, and therefore, no representations or warranties are made by those party to the Supporting Growth Alliance as to the accuracy or completeness of this information.

Map intended for distribution as a PDF document.  
Scale may be incorrect when printed.

Contains information sourced from LINZ. Crown Copyright Reserved.

Unitary plan data sourced from Auckland Council published web services.  
Legend information can be viewed on Auckland Council unitary plan viewer.

Linework shown on this plan is conceptual only.  
Not to be used for construction.

Esri Community Maps Contributors, LINZ, Stats NZ, Esri, HERE, Garmin, Foursquare, METI/NASA, USGS, Eagle Technology, Land Information New Zealand, GEBCO, Community maps contributors

Map Scale @ A3:



Revision	Author	Verified	Approved	Date
1	Author	DRAFT	DRAFT	dd/mm/yyyy

**FOR INTERNAL USE ONLY**

**Supporting Growth**

**AUP Maps - Do Minimum Scenario - NoR 1**

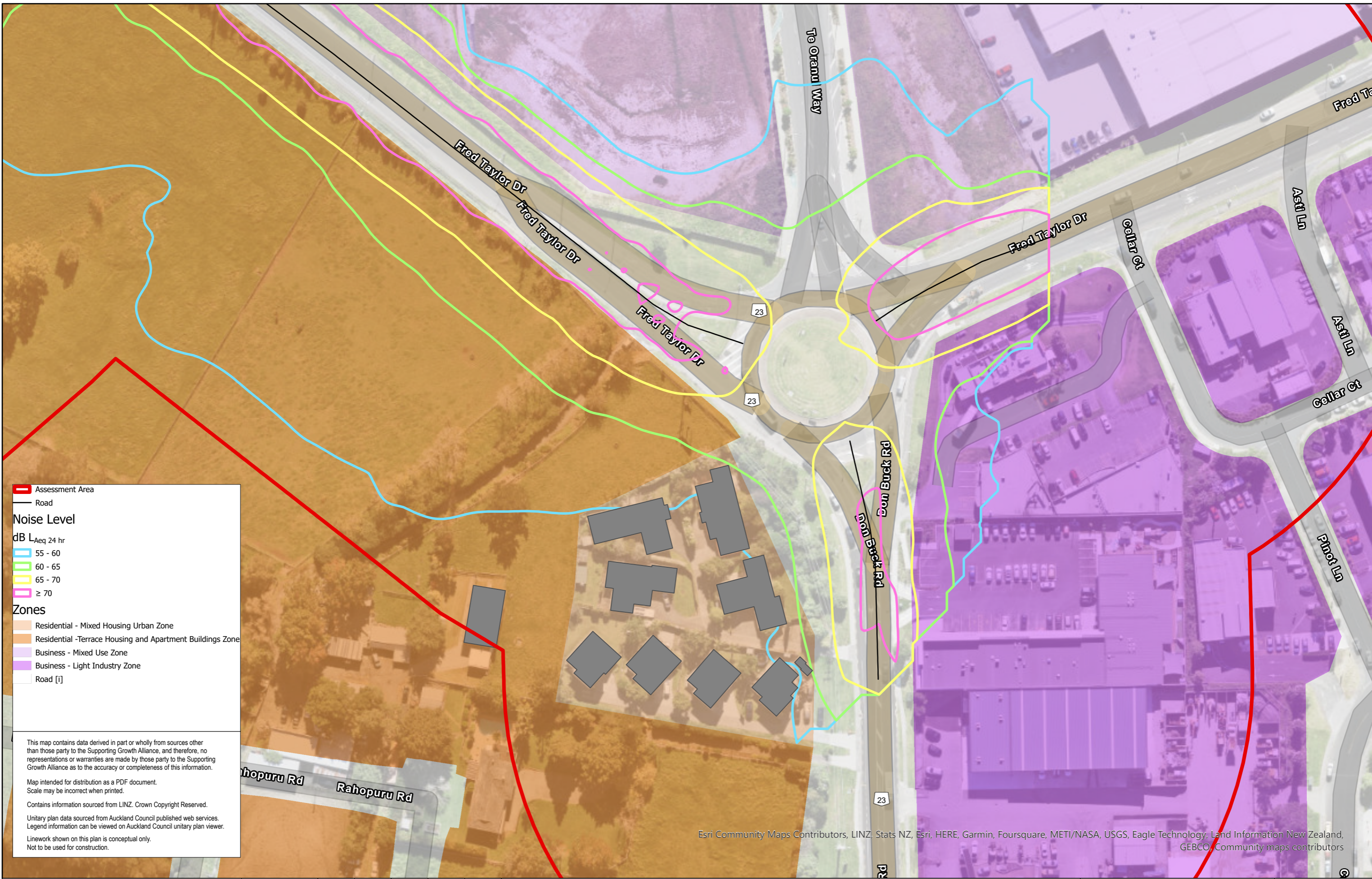
*Working Plans of Te Tupu Ngatahi.*  
*For the purpose of INTERNAL workshops (not for wider distribution).*

**YET TO BE VERIFIED.**

Client:	Supporting Growth
Project:	North West HIF



Discipline:	GIS
Drawing No:	SGA-NV-NW-013



**Assessment Area**  
 — Road

**Noise Level**  
 dB LAeq 24 hr

- 55 - 60
- 60 - 65
- 65 - 70
- ≥ 70

**Zones**

- Residential - Mixed Housing Urban Zone
- Residential - Terrace Housing and Apartment Buildings Zone
- Business - Mixed Use Zone
- Business - Light Industry Zone
- Road [I]

This map contains data derived in part or wholly from sources other than those party to the Supporting Growth Alliance, and therefore, no representations or warranties are made by those party to the Supporting Growth Alliance as to the accuracy or completeness of this information.

Map intended for distribution as a PDF document.  
 Scale may be incorrect when printed.

Contains information sourced from LINZ. Crown Copyright Reserved.

Unitary plan data sourced from Auckland Council published web services.  
 Legend information can be viewed on Auckland Council unitary plan viewer.

Linework shown on this plan is conceptual only.  
 Not to be used for construction.

Esri Community Maps Contributors, LINZ, Stats NZ, Esri, HERE, Garmin, Foursquare, METI/NASA, USGS, Eagle Technology, Land Information New Zealand, GEBCO, Community maps contributors

Map Scale @ A3:



Revision	Author	Verified	Approved	Date
1	Author	DRAFT	DRAFT	dd/mm/yyyy

**FOR INTERNAL USE ONLY**

**Supporting Growth**

**AUP Maps - Do Minimum Scenario - NoR 2b**

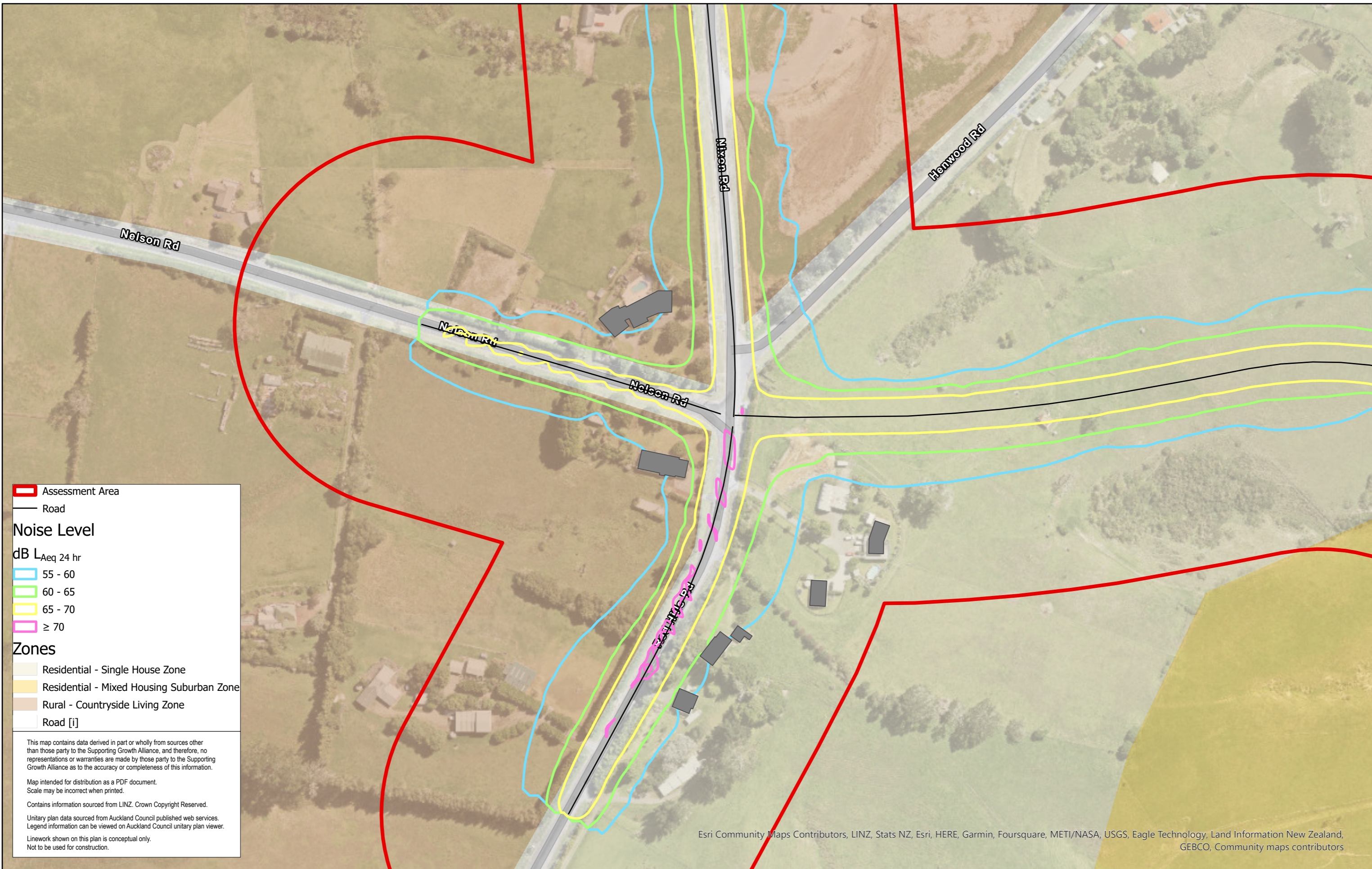
Working Plans of Te Tupu Ngatahi.  
 For the purpose of INTERNAL workshops (not for wider distribution).

**YET TO BE VERIFIED.**

Client:	Supporting Growth
Project:	North West HIF



Discipline:	GIS
Drawing No:	SGA-NV-NW-013



**Assessment Area**

**Road**

**Noise Level**

dB L<sub>Aeq</sub> 24 hr

- 55 - 60
- 60 - 65
- 65 - 70
- ≥ 70

**Zones**

- Residential - Single House Zone
- Residential - Mixed Housing Suburban Zone
- Rural - Countryside Living Zone
- Road [i]

This map contains data derived in part or wholly from sources other than those party to the Supporting Growth Alliance, and therefore, no representations or warranties are made by those party to the Supporting Growth Alliance as to the accuracy or completeness of this information.

Map intended for distribution as a PDF document.  
Scale may be incorrect when printed.

Contains information sourced from LINZ. Crown Copyright Reserved.

Unitary plan data sourced from Auckland Council published web services.  
Legend information can be viewed on Auckland Council unitary plan viewer.

Linework shown on this plan is conceptual only.  
Not to be used for construction.

Esri Community Maps Contributors, LINZ, Stats NZ, Esri, HERE, Garmin, Foursquare, METI/NASA, USGS, Eagle Technology, Land Information New Zealand, GEBCO, Community maps contributors

Map Scale @ A3:



Revision	Author	Verified	Approved	Date
1	Author	DRAFT	DRAFT	dd/mm/yyyy

**FOR INTERNAL USE ONLY**

**Supporting Growth**

**AUP Maps - Do Minimum Scenario - NoR 2c**

*Working Plans of Te Tupu Ngatahi.*  
*For the purpose of INTERNAL workshops (not for wider distribution).*

**YET TO BE VERIFIED.**

Client:	Supporting Growth
Project:	North West HIF



Discipline:	GIS
Drawing No:	SGA-NV-NW-013